



# arc

*Operating & Installation Instructions*



# arc

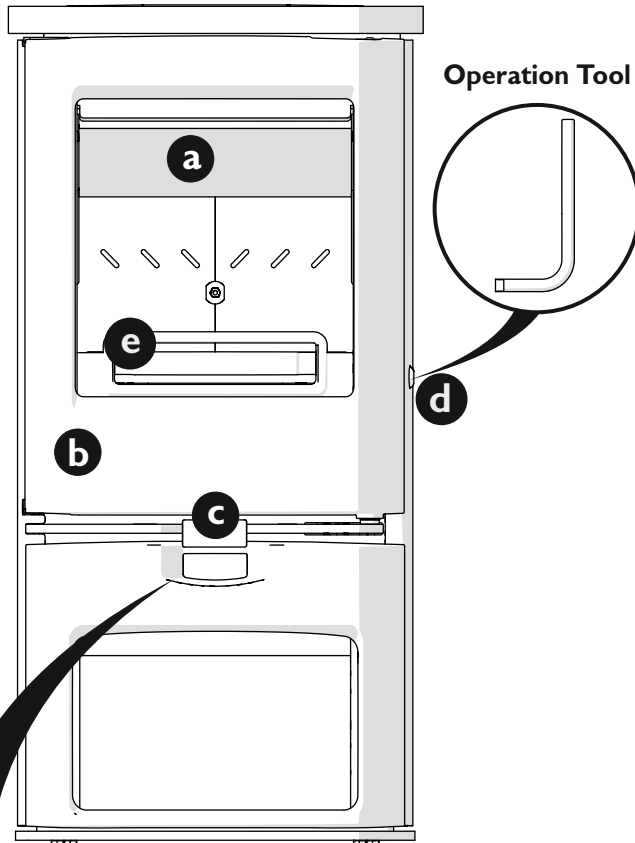
## CONTENTS

### OPERATING INSTRUCTIONS

Fuel . . . . .	5
Multi Grate . . . . .	5
Riddling . . . . .	6
Lighting . . . . .	6
Controlling The Fire . . . . .	6
Refuelling . . . . .	7
Ash Clearance . . . . .	7
Reduced Burning . . . . .	7
Maintenance . . . . .	7
Throat Plate & Flueway Clearing . . . . .	8
Chimney Sweeping . . . . .	8
Trouble Shooting . . . . .	9
CO Alarm . . . . .	9
If you need further help . . . . .	9

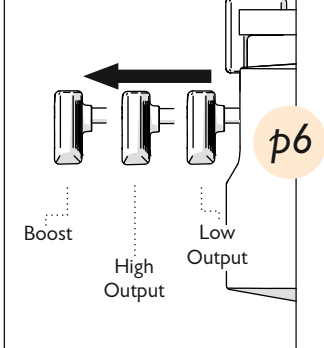
### INSTALLATION INSTRUCTIONS

Unpacking The Stove . . . . .	10
Health & Safety Precautions . . . . .	10
CO Alarms . . . . .	10
Specification . . . . .	10
Chimney . . . . .	11
Hearth & Fire Surround . . . . .	11
Connection to Flues . . . . .	12
Soot Doors . . . . .	12
Pre Lighting Check . . . . .	12
Commissioning . . . . .	13
Clean Air Act Information . . . . .	13
Certification . . . . .	14
Dimensions Arc 5 . . . . .	15
Dimensions Arc 7 . . . . .	16
Arc 5 Parts List . . . . .	17
Arc 5 Low Stand Parts List . . . . .	18
Arc 7 Parts List . . . . .	19
Arc 7 Low Stand Parts List . . . . .	20



- a Throat plate**  
Improves efficiency of stove by slowing down flue gases
- b Door**  
Keep closed when stove is in use
- c Door handle**  
Pull to open
- d Riddler knob**  
Use operating tool to riddle
- e Fuel retainer**  
Ensure fuel does not protrude beyond retainer

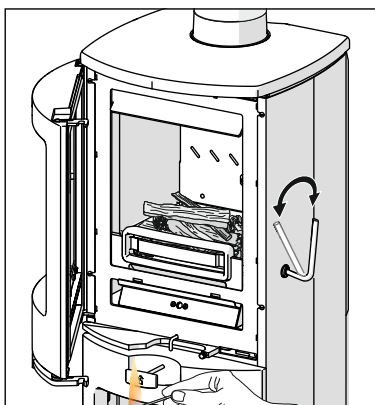
**Air control**



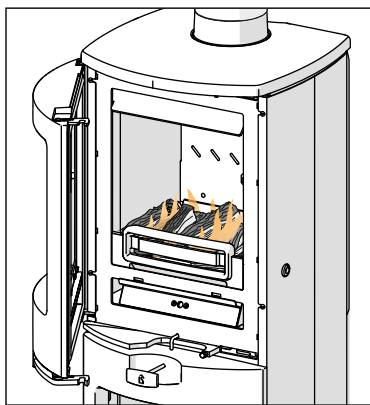
**MAINTENANCE AND CLEANING**

- Glass** Wipe with damp, lint free cloth. Any stubborn deposits on the glass may be removed with a proprietary stove glass cleaner or ceramic hob cleaner.
- Throat plate** Take down once a month and clean. Sweep sooty deposits into fire.
- Chimney** Have chimney swept twice a year. Chimney can be swept through stove.
- Servicing** Stove should be serviced by a professional at least once a year.

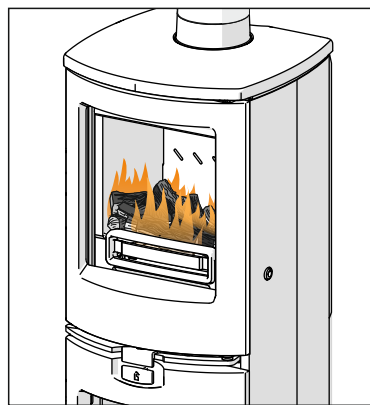
**LIGHTING AND CONTROLLING THE FIRE**



**Add kindling and paper or firelighters.** Keep air control fully out and close door



**Once kindling is alight, add smaller logs.** Keep air control fully out and close door



**Add larger logs once fire is established.** Air control can be reduced to medium

**Suitable fuels for your Charnwood:**

Wood logs  
Smokeless Fuel

p5

**Unsuitable fuels:**

Petroleum coke  
Liquid fuel  
Household waste  
Coal singles  
Small nuts or coal dust  
Wet or unseasoned wood



Congratulations on becoming the owner of a Charnwood Arc Stove. Your stove has been approved in smoke control areas to burn wood logs if it is used in accordance with these instructions. It is very important that you read and understand these instructions before using the stove.

Before lighting the stove check with the installer that the work and checks described in the Installation Instructions have been carried out correctly and that the chimney has been swept, is sound and free from any obstructions. The stove is not suitable for use in a shared flue system.

Remember that the stove will be hot and that it is made from hard materials – ensure that you have good balance before operating the fire. Always use the provided operating tool and gloves.

Do not use an aerosol spray on or near the stove when it is alight. There is a risk of explosion or flash ignition of the spray.

When using the stove in situations where children, aged and/or infirm persons are present a fireguard must be used to prevent accidental contact with the stove. The fireguard should be manufactured in accordance with BS 8423:2002.

The stove is suitable for intermittent operation.

## FUEL

Please pay careful attention to the special points made with each type of fuel as they will help you to get the best from your stove. It must be remembered that only authorised fuels and wood logs may be burnt in smoke control areas on this stove. If you are not sure whether you are in a smoke control area, please check with your Local Authority.

At first you may find it helpful to try several fuels to find the most suitable. If you are unable to obtain the fuel you want, ask your supplier, or an approved fuel distributor, to suggest an alternative.

### **Authorised Mineral Fuels**

Authorised mineral fuels may be burned in smoke control areas on this appliance. Your local fuel supplier or stove shop will be able to advise you which fuels are available locally. A list of authorised fuels can be found at:

<https://smokecontrol.defra.gov.uk/fuels.php>

Take care to only burn good quality fuels in order to obtain the greatest efficiency and to maintain the life of the appliance.

### **Wood logs**

Only dry well seasoned wood should be burnt on this appliance as burning wet unseasoned wood will give rise to heavy tar deposits in the stove, on the glass and within the chimney. For the same reason hard woods (such as Ash, Beech and Oak) are better than soft woods (such as Pine and Spruce). Burning wet unseasoned wood will also result in considerably reduced outputs. The wood should be cut and split and then left to season in a well ventilated dry place for at least one year but preferably two years before use. Approximate suitable log sizes are:

180mm(7in) long and 75mm (3in) diameter

Log moisture content of less than 20% is recommended.

### **PETROLEUM COKE IS NOT SUITABLE FOR USE ON THIS APPLIANCE. ITS USE WILL INVALIDATE THE GUARANTEE.**

This stove is not designed to burn household waste.

HETAS Ltd Appliance Approval only covers the use of Wood Logs and Smokeless Fuels on this appliance.

## MULTI GRATE

Your Charnwood Arc is fitted with a multi grate to enable wood or smokeless fuel to be burned and ash to be cleared. The grate has two positions:

- 1) In the solid fuel position the grate bars are vertical with gaps in between allowing the primary combustion air to come up through the grate and through the fuel bed.
- 2) In the wood position the grate bars are horizontal, allowing the combustion air to come round the sides of the grate and over the top of it. When in the closed position ash is able to build up on the grate as is necessary for effective wood burning.

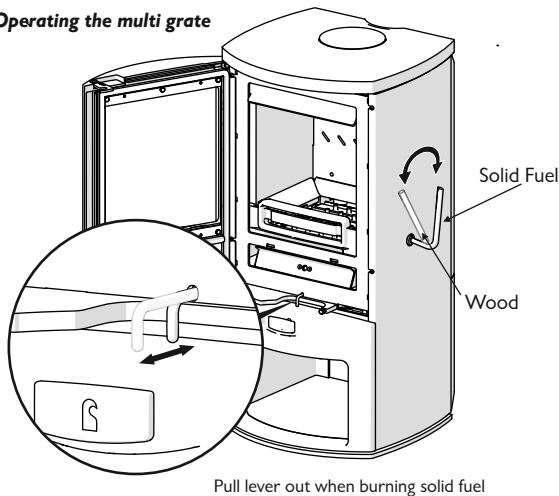
Movement of the grate from one position to the other is effected using the operation tool supplied as shown in Fig.1.

The grate is put into the solid fuel position by turning the operation tool clockwise and pulling out the fuel selection lever Fig.1. The grate is put into the wood position by turning the operation tool anticlockwise and pushing the fuel selection lever in. To riddle the appliance the tool should be moved between the clockwise and anticlockwise positions several times. When burning wood the ash should be allowed to build up and riddling should only be carried out once or twice a week.

# OPERATING INSTRUCTIONS



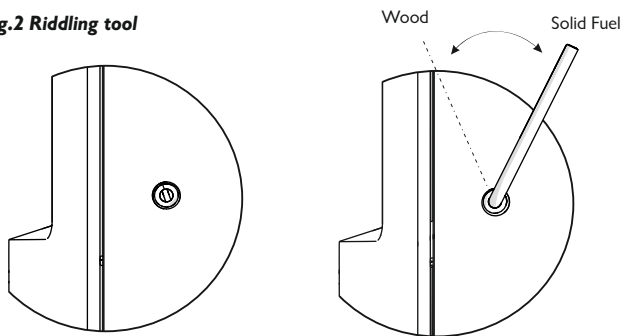
**Fig.1 Operating the multi grate**



## RIDDLING

When burning wood, ash should be allowed to build up and only riddled when the ash begins to cover the rear fireplate. The fire should be riddled with the door shut (see Fig.2). Place the operating tool onto the riddling lever and rotate between the open and closed positions several times. Too much riddling can result in emptying unburnt fuel into the ashpan and should therefore be avoided. After riddling, the grate should be put back into the closed position for burning wood.

**Fig.2 Riddling tool**



## LIGHTING

On initial lighting, the stove may smoke and give off an odour as the silicon paint with which the firebox is painted reacts to the heat. This is normal and will cease after a short time, but meanwhile the room should be kept well ventilated.

At first only light a small fire and burn it slowly for two hours to allow any residual moisture in the chimney to evaporate.

Light the stove using dry kindling wood and paper or fire lighters. Put the paper, or fire lighters, and kindling in the firebox and cover with a few small dry logs. Open the air control fully (see Fig. 3). Light the paper or fire lighters. The door may be left cracked open for a few minutes to assist the combustion and heat up the firebox more

quickly. When the kindling wood is well alight add a few more small logs, close the door but leave the air control fully open. When the flames are established around these logs, load the stove with the required fuel load. Maintain the air control at maximum at this stage. Once the fire is up to temperature the airwash system will begin to work, so allow the fire to become hot before adjusting the air control to the required setting. During the lighting period, do not leave the stove unattended. Do not leave the door open except as directed above to avoid excessive smoke.

When relighting the stove, leave the ash on the base if burning wood, unless it is becoming too deep, in which case some of it may be removed.

## CONTROLLING THE FIRE

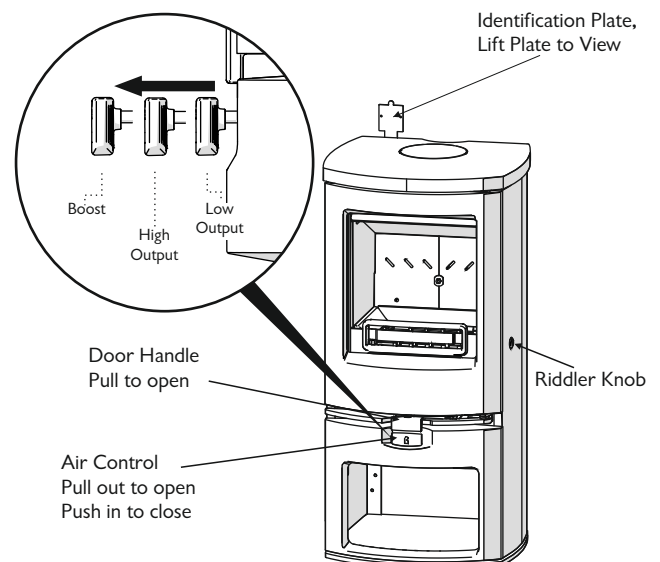
The rate of burning and hence the output is controlled by the air control (see Fig.3).

Open the air control fully (boost position) when lighting or when rapid burning is required. It should not be left fully open for long periods as this can cause over-firing or excessive smoke production. For high output move the air control to the 'click position' or for low burning to the fully closed position.

When the fire is burning normally the air control gives enough airwash to keep the glass clean. However, it will not always be possible to keep the glass clean with the air control fully closed. For correct firing we recommend the use of a stove pipe thermometer which may be purchased from your supplier or from Charnwood.

The Charnwood Arc is fitted with an air control stop for use in a smoke control area. This stops the stove from burning too slowly.

**Fig. 3 Stove controls**



# OPERATING INSTRUCTIONS



## REFUELLING

Keep the firebox well filled but do not allow fuel to spill over the top of the fuel retainer.

Logs should be evenly distributed, filling the firebed to give the most pleasing flame pattern. The air control must be fully opened after refuelling until the flames are established above the fire. It is best to refuel on to a hot bed of embers. If at this point the fire starts to die, the door must be cracked open until the fire is revived. If the fire has started to die down before refuelling, then more kindling wood must be added, the air control opened fully and the door cracked open to re-establish the firebed before adding larger logs (see suitable log sizes in Fuel section). This will avoid excessive smoke emission.

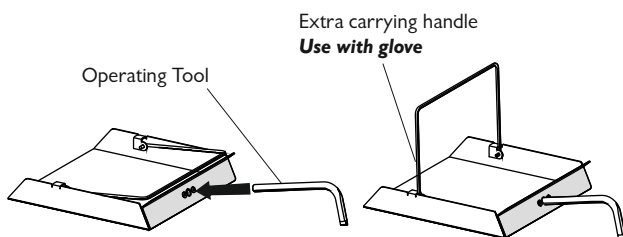
Care should be taken, especially when burning wood, that fuel does not project over the fuel retainer or damage to the glass may be caused when the door is closed. It can also cause the glass to blacken up. Maximum filling height is such that logs cannot fall from the fire when the door is opened.

In smoke controlled areas do not fill the stove above the level of the air holes in the back bricks, as overloading can cause excess smoke.

Do not operate with the door left open except as directed by the instructions as this can cause excessive smoke.

## ASH CLEARANCE

**Fig.4 Ashpan**



For optimum wood burning, it is important to leave a layer of ash around 1cm thick on the base of the stove. Before removing ash ensure that it has cooled down,

The ashpan is handled using the operation tool and gloves provided. Ensure that the tool is fully engaged before lifting (See Fig.4). When carrying the ashpan, it should be kept horizontal and supported by the carrying handle to prevent it falling off the tool. Please avoid emptying hot ash into plastic liners or bins.

The Ashpan should be emptied regularly before it becomes too full. Never allow the ash to accumulate in the ashpan so that it comes in

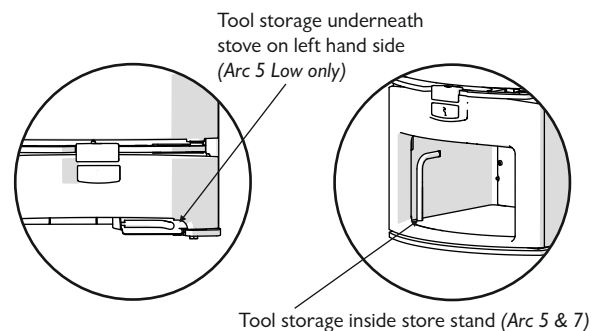
contact with the underside of the grate as this will seriously damage the grate bars.

To make ash removal easier there are ash carriers available. These may be purchased from your supplier or, in case of difficulty, from Charnwood.

## OPERATING TOOL HOLDER

When not in use the operating tool can be stored inside the store stand. On the low model the operating tool can be stored on the shelf underneath the stove. (See fig. 5.)

**Fig. 5. Operating tool storage**



## REDUCED BURNING

For reduced burning the fire door must be closed.

When burning wood in areas that are not smoke controlled, load some large logs on the fire and allow to burn for half an hour before closing the air control (this will help to reduce tar deposits in the chimney). Some experimentation may be necessary to find the setting most suitable for the type of fuel being used and the draw on the chimney.

## MAINTENANCE

### Cleaning

The stove is finished with a high temperature paint which will withstand the temperatures encountered in normal use. This may be cleaned with a damp lint-free cloth when the stove is cold. Should re-painting become necessary, high temperature paints are available from your supplier or from stove shops.

### Cleaning the Glass

Most deposits on the glass may be burnt off simply by running the fire at a fast rate for a few minutes. If it becomes necessary to clean the glass then open the door and allow it to cool. Clean the glass using a damp cloth and then wiping over with a dry cloth. Any stubborn



deposits on the glass may be removed with a proprietary stove glass cleaner or ceramic hob cleaner. Do not use abrasive cleaners or pads as these can scratch the surface which will weaken the glass and cause premature failure

## When Not in Use

If the fire is going to be out of use for a long period (for instance in the summer) then to prevent condensation, and hence corrosion, the air control should be left fully open and the fire door left ajar. It is also advisable to sweep the chimney and clean out the fire. Spraying the inside of the door and firebox with a light oil, such as WD40, will also help to keep all internal parts working well. After long periods where the fire has been out of use, the chimney and appliance flueways should be cleaned before lighting.

## Door Seals

For the fire to operate correctly it is important that the door seals are in good condition. Check that they do not become worn or frayed and replace them when necessary.

## Servicing

It is recommended that the fire is serviced once a year to keep it in first class working order. After cleaning out the firebox thoroughly, check that all internal parts are in good working order, replacing any parts that are beginning to show signs of wear. Check that the door seals are in good condition and that the door seals correctly. A servicing guide is available on request. Repairs or modifications may only be carried out by the Manufacturer or their approved agents. Use only genuine Charnwood replacement parts.

## THROAT PLATE AND FLUEWAY CLEANING

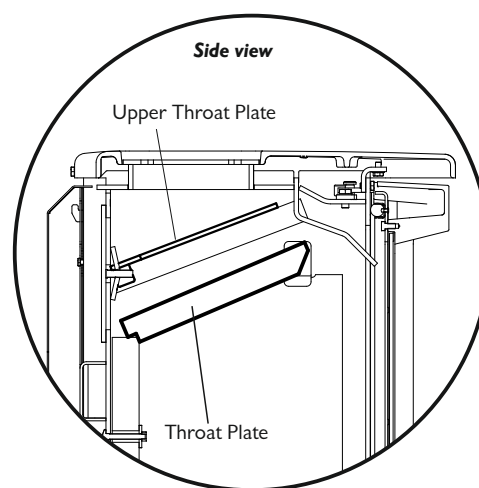
It is important that the upper and lower throat plates and all the stove flueways are kept clean in order to prevent potentially dangerous fume emission. They should be cleaned at least monthly, and more frequently if necessary. It is necessary to let the fire out to carry out these operations.

To remove the lower throat plate, slide it forwards so that it clears the back brick, then slide it either right or left so that the opposite side clears the top of the side brick and can be gently lowered. The upper throat plate can then be located and rests on top of the air wash tubes (fig.6). Any sooty deposits should then be swept from both plates and into the fire.

First return the upper throat plate to its location above the air wash

tubes. To return the lower throat plate to its correct position- At an angle, insert the throat plate so that it sits on top of either the right or left side brick. Raise the opposite side and slide so that the throat plate is central and supported by both side bricks. Slide back so that the throatplate rests neatly on the top of the back bricks.

**Fig.6 Throat Plate Location**



## CHIMNEY SWEEPING

Where the chimney previously served an open fire, it is possible that the higher flue gas temperature from a stove may loosen soot deposits with the consequent risk of flue blockage. It is therefore recommended that the chimney be swept a second time within a month of regular use after installation.

The chimney should be swept at least twice a year. Where the top outlet or vertical rear flue connector is used it will generally be possible to sweep the chimney through the appliance.

First remove the fuel retainer, the throat plate and upper throat plate. Then sweep the chimney ensuring that soot is removed from all horizontal surfaces after sweeping.

In situations where it is not possible to sweep through the appliance the installer will have provided alternative means, such as a soot door. After sweeping the chimney the appliance flue outlet and the flue pipe connecting the stove to the chimney must be cleaned with a flue brush.

After clearing any soot from within the stove, replace the throat plate (see Fig. 6) and the fuel retainer.

Different types of sweep's brushes are available to suit different flueways. For prefabricated insulated chimneys the manufacturers instructions with regard to sweeping should be consulted.



## TROUBLE SHOOTING

### Fire Will Not Burn

Check that:

- a) the air inlet is not obstructed in any way,
- b) chimneys and flueways are clear,
- c) a suitable fuel is being used,
- d) there is an adequate air supply into the room,
- e) an extractor fan is not fitted in the same room as the stove.
- f) there is sufficient draw in the chimney. Once the chimney is warm a draught reading of at least 1.25 mm (0.05 in.) water gauge (12Pa) should be obtained.

### Blackening of Door Glass

Differences in chimney draughts mean that the best settings of the air controls will vary for different installations. A certain amount of experimentation may be required, however the following points should be noted and with a little care should enable the glass to be kept clean in most situations:

- a) Wet or unseasoned wood, or logs overhanging the front fence will cause the glass to blacken.
- b) The airwash relies on a supply of heated air to keep the glass clean, therefore, when lighting the stove allow the firebed to become well established before closing the air control. This may also be necessary when re-fuelling the stove.
- c) When re-fuelling keep the fuel as far back from the front fence as possible, do not try to fit too much fuel into the firebox.
- d) Do not completely close the air control.

It is always more difficult to keep the glass clean when running the stove very slowly for long periods.

If blackening of the glass still occurs check that all flue connections and the blanking plate are well sealed. It is also important that the chimney draw is sufficient and that it is not affected by down-draught. When the chimney is warm a draught reading of at least 1.25 mm (0.05 in.) water gauge (12Pa) should be obtained. Some blackening of the glass may occur below the level of the fuel retainer. This will not obscure the view of the fire or affect its performance.

### Fume Emission

#### Warning Note:

**Properly installed and operated this appliance will not emit fumes. Occasional fumes from de-ashing and re-fuelling may occur. Persistent fume emission is potentially dangerous and must not be**

**tolerated. If fume emission does persist, then the following immediate actions should be taken:**

- a) Open doors and windows to ventilate the room and then leave the premises.**
- b) Let the fire out and safely dispose of the fuel from the appliance.**
- c) Check for flue or chimney blockage, and clean if required.**
- d) Do not attempt to re-light the fire until cause of fuming has been identified, if necessary seek professional advice.**

The most common cause of fume emission is flueway or chimney blockage. For your own safety these must be kept clean.

### Fire blazing out of control

Check that:

- a) The door is tightly closed.
- b) The air control slider is fully closed.
- c) A suitable fuel is being used.
- d) Door seals and airwash slide are intact.

### Chimney Fires

If the chimney is thoroughly and regularly swept, chimney fires should not occur. However, if a chimney fire does occur close the air control, and tightly close the door of the appliance. This should cause the chimney fire to go out in which case the controls should be kept closed until the stove has gone out. The chimney and flueways should then be cleaned. If the chimney fire does not go out when the above action is taken then the fire brigade should be called immediately. After a chimney fire the chimney should be carefully examined for any damage. Expert advice should be sought if necessary.

## CO ALARM

Your installer should have fitted a CO alarm in the same room as the appliance. If the alarm sounds unexpectedly, follow the instructions given under "Warning Note" above.

## IF YOU NEED FURTHER HELP

If you need further help with your Charnwood then your Installer will be able to provide the answers to most questions. Your Local Charnwood Premier Dealer has a great deal of experience and will also be able to provide helpful advice. Further help is available from the Charnwood Customer Services department who will be pleased to give advice, if necessary.

# INSTALLATION INSTRUCTIONS



## UNPACKING THE STOVE

The stove arrives bolted and strapped to its pallet. There must be adequate facilities for unloading and manoeuvring into position. First remove the wrapping, then release the stove from the pallet by removing 4 pallet bolts using a 10mm spanner. The pallet brackets can now be removed from the stove by tilting it and using a 13mm spanner to remove the bolts. The pallet is intended to be cut up and used for kindling fuel. Refit the levelling bolts.

## HEALTH AND SAFETY PRECAUTIONS

Please take care when installing the stove that the requirements of the Health and Safety at Work Act 1974 are met.

Some types of fire cement are caustic and should not be allowed to come into contact with the skin. In case of contact wash with plenty of water.

If there is a possibility of disturbing any asbestos in the course of installation then please use appropriate protective equipment.

There must not be an extractor fan fitted in the same room as the stove as this can cause the appliance to emit fumes into the room.

There must be an adequate air supply into the room in which the appliance is installed to provide combustion air. The combustion air supply must be via a permanently open vent. The requirement for minimum free area is partly dependent on the design air permeability of the house. In older properties the air permeability will be above  $5.0\text{m}^3/(\text{h.m}^2)$ , but in some modern properties it may be less. The vent must be positioned such that it is not liable to blockage.

Minimum areas are given in the following table:

Air Permeability $\text{m}^3/(\text{h.m}^2)$	Minimum Vent Area $\text{cm}^2(\text{in}^2)$	
	Arc 5	Arc 7
> 5.0	No requirement	11 (1.76)
<5.0	27.5 (4.3)	38.5 (6.0)

A fixed ducted air supply may be used as an alternative to the traditional method of using a permanent open vent into a room to supply air for combustion.

External air supply kits are available please contact Charnwood for more information.

This stove is capable of intermittent operation, and is not suitable for use in a shared flue system.

In addition to these instructions the requirements of BS.8303 and BSEN 15287-1:2007 must be fulfilled. Local Authority Bylaws and Building Regulations, including those referring to national and European Standards, regarding the installation of Solid Fuel burning appliances, flues and chimneys must also be observed.

## CO ALARMS

Building regulations require that whenever a new or replacement fixed solid fuel or wood/biomass appliance is installed in a dwelling a carbon monoxide alarm must be fitted in the same room as the appliance. Further guidance on the installation of the carbon monoxide alarm is available in BS EN 50292:2002 and from the alarm manufacturer's instructions. Provision of an alarm must not be considered a substitute for either installing the appliance correctly or ensuring regular servicing and maintenance of the appliance and chimney system.

## SPECIFICATION

The outputs in the table are based on a 45 minute re-fuelling cycle burning seasoned hardwood logs. Solid fuel results are based on a 1 hour refuelling cycle. All tests are carried out in accordance with BSEN 13240.

Specification	Arc 5	Arc 5	Arc 7	Arc 7
Fuel	Wood Logs	Smokeless Fuel	Wood Logs	Smokeless Fuel
Nominal Heat Output kW (BTU/hr)	5.0 (17,000)	5.0 (17,000)	7.5 (25,590)	7.7 (26,270)
Low Stove Weight kg (Packed)	130	130	150	150
Store Stand Stove Weight kg (Packed)	150	150	170	170
Flue Temperature °C	269	294	304	308
Minimum Flue Draught	12Pa	12Pa	12Pa	12Pa
Flue gas Mass Flow g/s	4.4	3.4	5.3	5.7
Hearth Temperature °C	<100	<100	<100	<100
	<b>Side</b>	<b>Back</b>	<b>Side</b>	<b>Back</b>
Minimum distance from combustibles mm Insulated Flue	270	80	270	150
Minimum distance from combustibles mm Uninsulated Flue	300	200	270	150



## CHIMNEY

In order for the appliance to perform satisfactorily the chimney height must not be less than 4 metres measured vertically from the outlet of the stove to the top of the chimney. The internal dimensions of the chimney should preferably be 150-200 mm (6"- 8") either square or round and **MUST NOT BE LESS THAN 125 mm (5") - Arc 5, 150 mm (6") - Arc 7.**

If an existing chimney is to be used it must be swept and checked, it must be in good condition, free from cracks and blockages, and should not have an excessive cross sectional area. If it was previously used by an open fire then the chimney should be swept one month after installation to clear any soot falls which may have occurred due to the difference in combustion between the stove and the open fire. If you find that the chimney is in poor condition then expert advice should be sought regarding the necessity of having the chimney lined. If it is found necessary to line the chimney then a lining suitable for Solid Fuel must be used.

If there is no existing chimney then a prefabricated block chimney or a twin walled insulated stainless steel flue to BSEN 15287-1:2007 can be used either internally or externally. These chimneys must be fitted in accordance with the manufacturers instructions and Building Regulations.

Single wall flue pipe is suitable for connecting the stove to the chimney but is not suitable for using for the complete chimney. If it is found that there is excessive draw in the chimney then a draught stabiliser should be fitted.

It is important that there is sufficient draw in the chimney and that the chimney does not suffer from down-draught. When the chimney is warm the draw should be not less than 1.25mm (0.05") water gauge (12 Pa). If in doubt about the chimney seek expert advice.

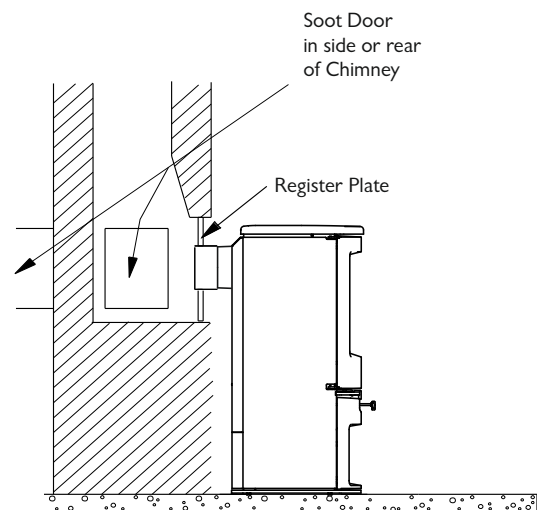
## HEARTH AND FIRE SURROUND

The stove must stand on a fireproof hearth and must not be situated closer than the minimum distance from combustible materials (see specification table) to the sides or rear above hearth level unless adequately fireproofed in accordance with local building regulations. The hearth must be of fireproof material and at least 12mm (1/2in.) thick. The positioning of the stove and the size of the hearth are governed by building regulations for Class 1 appliances. These building regulations state that the hearth must extend in front of the stove by at least 225mm (9 in.) and to the sides of the stove by at least 150mm (6 in.). When the fire door is open, it extends beyond

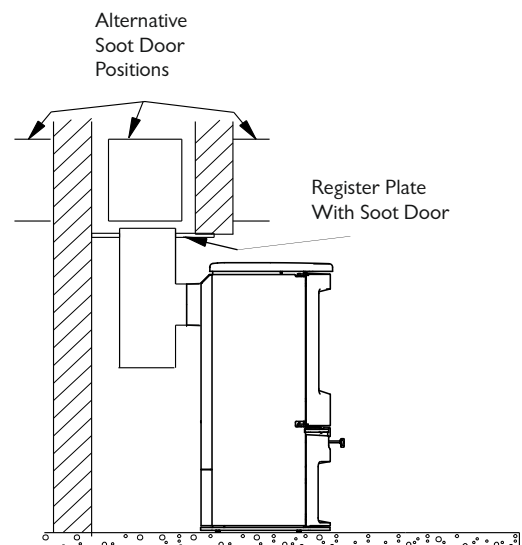
the flat front of the stove by 436mm - Arc 5, 450mm - Arc 7.

If in doubt as to the positioning of the stove, expert advice should be sought either from the supplier or the local building inspector. The fireplace must allow good circulation of air around the appliance to ensure that maximum heat is transferred to the room and also to prevent the fireplace from overheating. A gap of 150mm (6") each side and 300mm (12") above the appliance should give sufficient air circulation. If a wooden mantelpiece or beam is used in the fireplace it should be a minimum of 460mm (18"), and preferably 600mm (24") from the appliance. In some situations it may be necessary to shield

**Fig.7. Vertical register plate with bricked up fireplace**

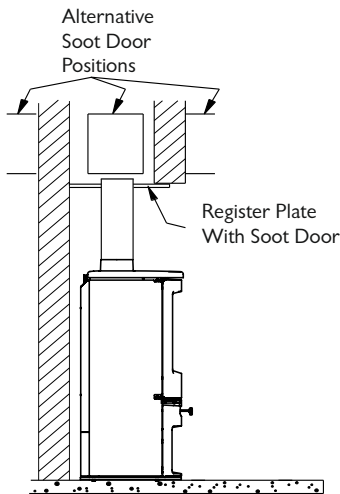


**Fig.8. Horizontal register plate with rear flue connection**

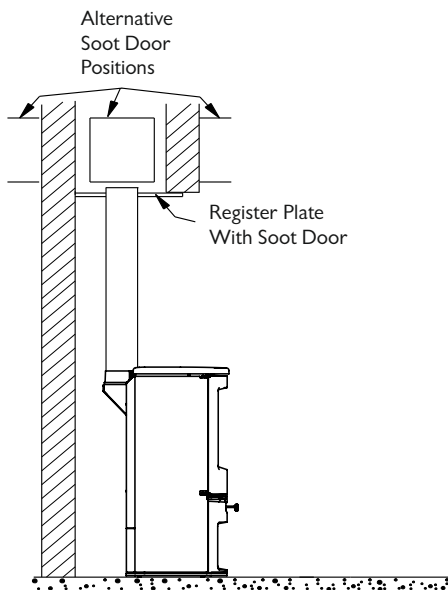




**Fig. 9. Horizontal register plate with top flue connection**



**Fig. 10. Horizontal register plate with optional vertical rear flue connector**



the beam or mantelpiece to protect it.

In order for the fire to operate correctly and to allow for access, there must be an air gap behind the appliance of at least 50mm, but be aware that this distance will need to be greater in some cases to meet Building Regulation requirements.

The appliance should be installed on a floor with adequate load-bearing capacity. If an existing construction does not meet this requirement then please take suitable measures to achieve this. (e.g. load distributing plate.)

## CONNECTIONS TO FLUES

The stove must be connected to the flue using flue pipe of **125mm (5") diameter - Arc 5, 150mm (6") diameter - Arc 7.**

This may be stainless steel, cast iron, or thick wall steel pipe. Straight lengths of Charnwood Pipe to match the stove are available if required.

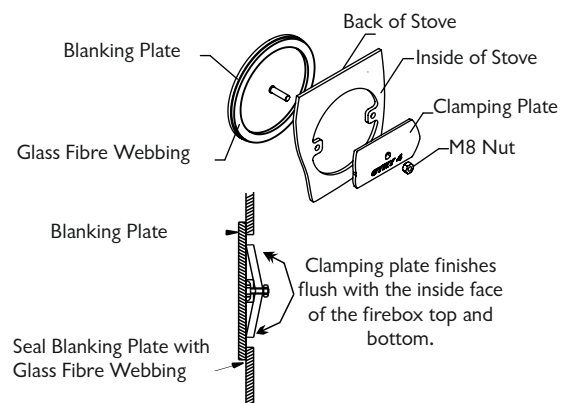
There are several ways of connecting the stove to the flue. These are illustrated in Figs. 7 to 10.

If the top flue connection or optional vertical rear flue connector is used then the chimney may be swept through the appliance.

Horizontal lengths of flue must be kept to a minimum and should not be more in length than the flue diameter.

The stove comes with the blanking plate (fig. 11) fitted to the top flue outlet. The seal for the **top** outlet is a 155mm dia ring of rope seal. The seal for the **rear** outlet is a length of adhesive backed fibre webbing supplied with instructions ref: TIS093. This is applied to the flue collar or the Vertical Rear Flue adapter for rear outlet installations. For top outlet installations, the blanking plate must be

**Fig. 11. Flue Blanking Plate.**



removed, have the webbing fitted to its sealing face, and fitted to the rear flue outlet. Ensure that the fold on the clamping plate is in line with the lugs on the firebox as shown in Fig 11. Ensure that the clamping plate does not prevent the throat plate from seating correctly. All flue connections must be well sealed. The top outlet connection is made directly to the cast top of the Arc 7 model, the Arc 7 is supplied with a flue collar for rear outlet installations.



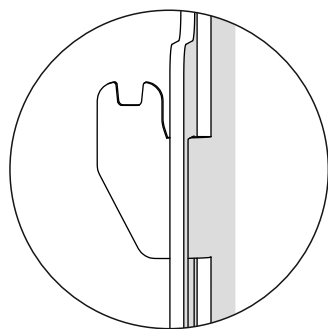
## SOOT DOORS

It is possible to pass a 16 inch diameter sweeps brush through the appliance but in most back outlet installations it will be necessary to have a soot door to enable the chimney to be swept. The optional vertical rear flue connector does allow the chimney to be swept through the stove. Soot doors may either be in the actual brickwork of the chimney or in the register plate. Various positions of soot doors are shown in Figs. 7 to 10.

## PRE LIGHTING CHECK

Ensure that the throat plate is fitted in the roof of the appliance. The location and positioning of the throat plate is shown in Fig. 6.

**Fig. 12. Heat shield**



Check that the front fence is fitted correctly and that the door closes properly.

## HEAT SHIELD

If removed, ensure that the slots in the heat shield are refitted over the tabs on the left and right hand side panels into the correct position see fig. 12.

## COMMISSIONING

On completion of the installation allow a suitable period of time for the fire cement and mortar to dry out before lighting the fire. Make a layer of ash or sand on the base of the stove before lighting. Check to ensure that smoke and fumes are taken from the appliance up the chimney and emitted safely. Also check all joints and seals. On completion of the installation and commissioning please leave the operating instructions with the customer and advise them on the use of the appliance.

## CAA AND SMOKE CONTROL

### The Clean Air Act 1993 and Smoke Control Areas

Under the Clean Air Act local authorities may declare the whole or part of the district of the authority to be a smoke control area. It is an offence to emit smoke from a chimney of a building, from a furnace or from any fixed boiler if located in a designated smoke control area. It is also an offence to acquire an "unauthorised fuel" for use within a smoke control area unless it is used in an "exempt" appliance ("exempted" from the controls which generally apply in the smoke control area).

In England appliances are exempted by publication on a list by the Secretary of State in accordance with changes made to sections 20 and 21 of the Clean Air Act 1993 by section 15 of the Deregulation Act 2015. Similarly in Scotland appliances are exempted by publication on a list by Scottish Ministers under section 50 of the Regulatory Reform (Scotland) Act 2014.

In Northern Ireland appliances are exempted by publication on a list by the Department of Agriculture, Environment and Rural Affairs under Section 16 of the Environmental Better regulation Act (Northern Ireland) 2016.

In Wales appliances are exempted by regulations made by Welsh Ministers.

Further information on the requirements of the Clean Air Act can be found here: <https://www.gov.uk/smoke-control-area-rules>

Your local authority is responsible for implementing the Clean Air Act 1993 including designation and supervision of smoke control areas and you can contact them for details of Clean Air Act requirements.

The Arc 5, 7 Store Stand and Arc 5, 7 Low have been recommended as suitable for use in smoke control areas when burning wood logs.

The Arc 5,7 Store Stand and Arc 5,7 Low models include factory-fitted modifications to the air controls which have been designed to meet Clean Air Act requirements for smoke control Exemption



**charnwood** 



**A.J WELLS & SONS LTD**

*Bishops Way, Newport, Isle of Wight PO30 5WS, United Kingdom*

A Division of A.J.Wells & Sons Limited Registered in England No. 03809371



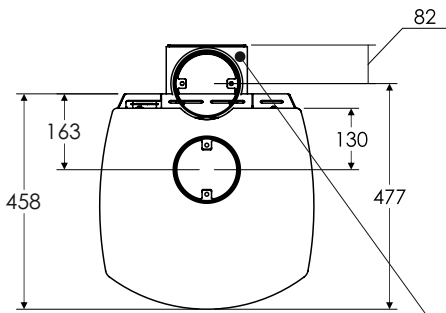
**EN16510-1:2022 / EN16510-2-1:2022**  
**ROOMHEATER**

	ARC 5 STORE STAND ARC 5 LOW	ARC 5 STORE STAND ARC 5 LOW	ARC 7 STORE STAND ARC 7 LOW	ARC 7 STORE STAND ARC 5 LOW
EC Certificate of conformity no:	EZ44-CPD-2016 EZL44-CPD-2016	EZ44-CPD-2016 EZL44-CPD-2016	KZ44-CPD-2016 KZL44-CPD-2016	KZ44-CPD-2016 KZL44-CPD-2016
Fuel type:	WOOD LOGS	SOLID FUEL	WOOD LOGS	SOLID FUEL
Space heating thermal output:	5 kW	5 kW	7 kW	7 kW
NOX(mg/Nm <sup>3</sup> )	115	124	99	144
OGC (mg/Nm <sup>3</sup> )	85	71	50	28
CO (mg/Nm <sup>3</sup> )	1000	875	614	373
Mean flue gas temperature:	269°C	294°C	304°C	308°C
Energy efficiency:	81%	82%	81%	79%
Particles (mg/Nm <sup>3</sup> )	22	34	24	30
Minimum distance to combustible materials with Insulated flue				
Side:	270mm	270mm	270mm	270mm
Rear:	80mm	80mm	150mm	150mm
Minimum distance to combustible materials with Uninsulated flue	✓	✓	✓	✓
Side:	300mm	300mm	270mm	270mm
Rear:	200mm	200mm	150mm	150mm
Fulfilled requirements: BStV of the City of Munich and the City of Regensburg FBStVO of the City of Aachen and the City of Düsseldorf 1.and 2. level of 1. BImSchV of Germany				

All product related data available here:

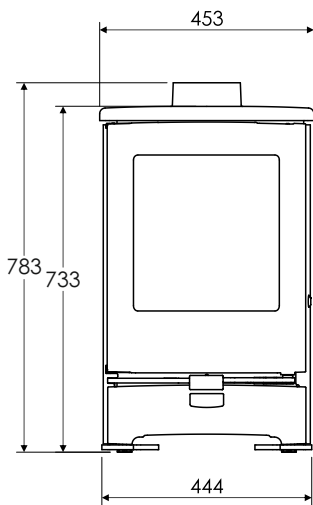
<https://www.charnwood.com/conformance-documentation>

# CHARNWOOD ARC 5 DIMENSIONS (mm)

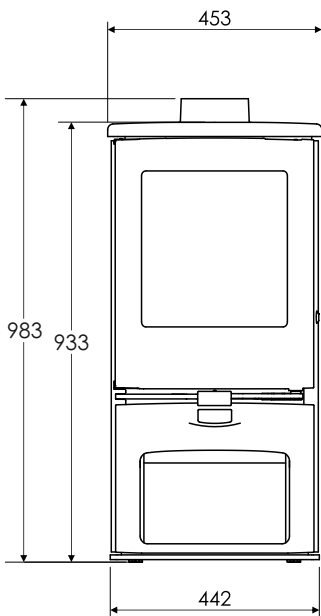
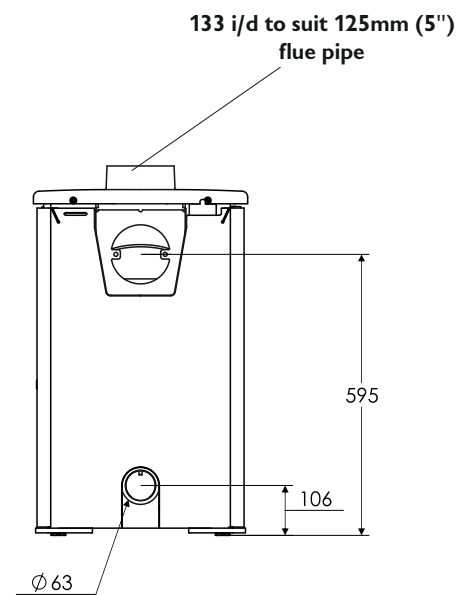
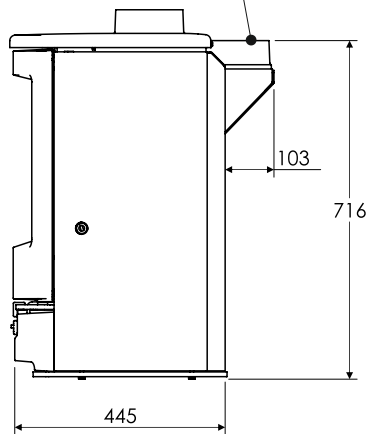


Plan View

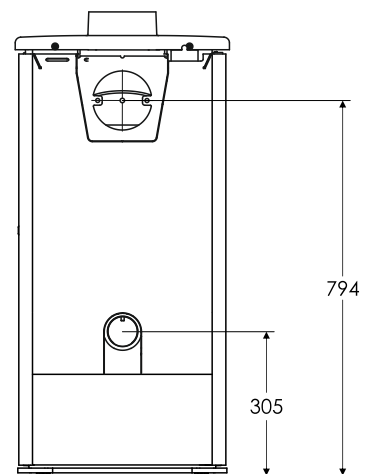
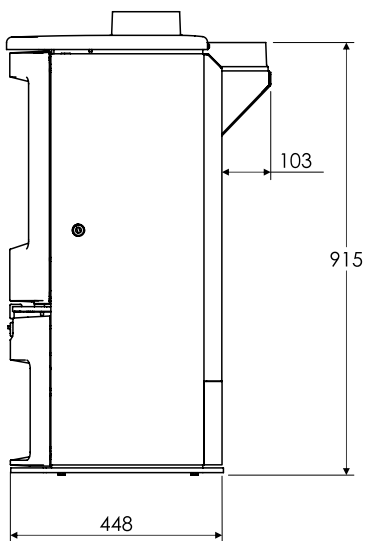
Optional vertical rear flue adaptor



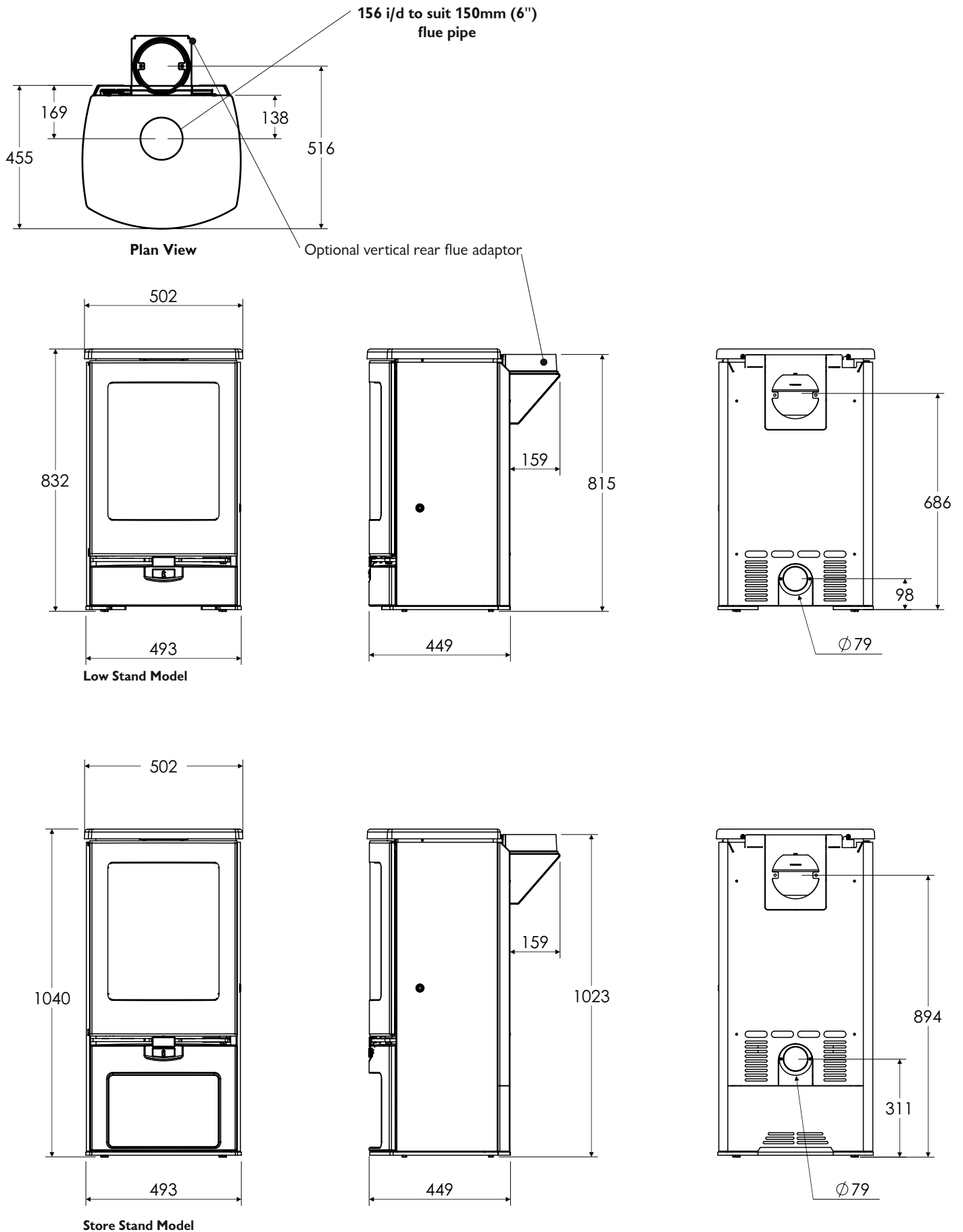
Low Stand Model



Store Stand Model

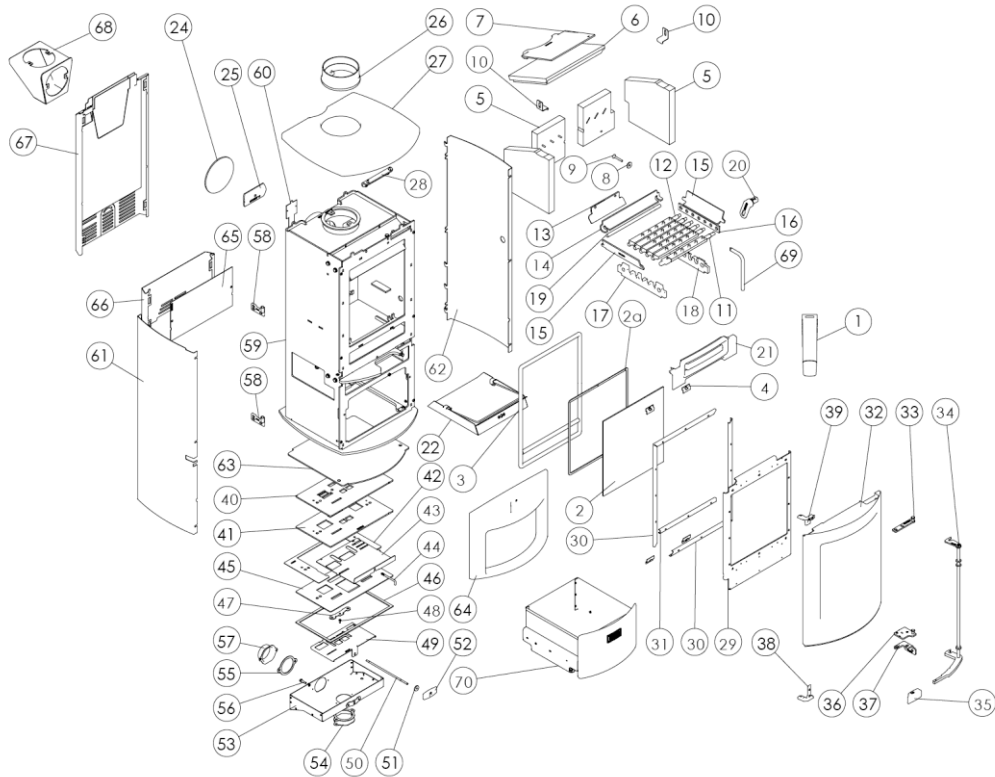


# CHARNWOOD ARC 7 DIMENSIONS (mm)



# Charnwood Arc 5 Parts List

Issue J



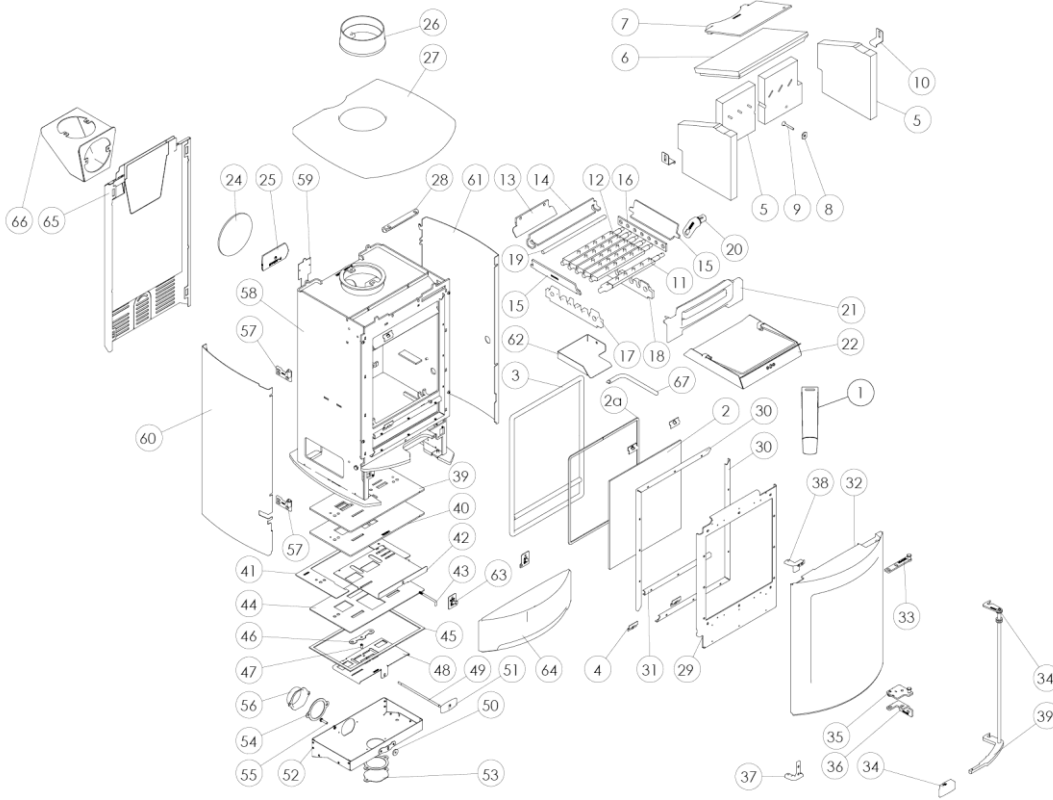
ItemPart No.	Description	ItemPart No.	Description
1*	008/TH085 Door Seal Adhesive	36	010/EZ055 Lower Latch Plate
2	006/EZ018 Glass (Inc Seal)	37	010/EZ065 Hinge Plate Lower
2a	008/EZ024 Glass Seal	38	002/EZ053 Lower Hinge Bracket
3	008/EZ002/S Door Seal Set Inc. Adhesive	39	002/EZ054 Upper Hinge Bracket
4	004/EZ023 Glass Retainer	40	004/EZ005 Air Slider Control Plate
5	011/EZ029S Fire Brick Set	41	010/EZ034 Slider Air Control Backing
6	011/EZ031 Brick Throat Plate	42	004/EZ033 Wood/Multifuel Surround
7	010/EZ032 Upper Baffle Plate	43	004/EZ035 Slider Wood/Multifuel
8	010/ER036 Brick Retaining Washer	44	004/EZ014 Wood/Multifuel Selection Lever
9	008/FFB125 Coach Bolt M6 x 45	45	008/EZ037 Air Slider Control Gasket
10	004/XV30 Brick Bracket	46	008/EZ006 Airbox Gasket
11	002/CG23 Driving Grate Bar	47	004/BR015 Clicker Retainer Plate
12	002/CG015S Set of Grate Bars (5)	48	008/ES36/01 Brass Ball Catch
13	010/EZ013 Ash Deflector	49	004/EZ020 Air Control Slider
14	010/EZ080 Rear Fire Plate	50	004/EZ016 Control Rod
15	010/EZ079 Side Fire Plate	51	008/BR052 Felt Washer
16	012/SY33 Mover Bar	52	008/EZ105 Air Control Handle
17	002/SY30 LH Carrier Bar	53	004/EZ041 Air Box Cover
18	002/EZ077 RH Carrier Bar	54	004/BR054 Blanking Plate
19	012/CG05 Idler Rod	55	008/BR044 Gasket
20	002/EZ098 Riddler Knob	56	008/FFS062 Defra Stop
21	002/EZ007 Front Fence	57	004/BR053 Air Inlet Spigot
22	004/EZ017 Ashpan	58	002/EZ063 Door Hinge Bracket
23	008/NV38 Flue Fixing Rope Seal	59#	001/EZ010 Firebox
24	012/PV09 Blanking Plate	60	012/EZ011 Serial Number Label
25	010/EY51 Clamping Plate	61#	004/EZ093L Left Hand Side Panel
26#	002/PV12B Flue Collar	62#	004/EZ093R Right Hand Side Panel
27#	002/EZ009 Cast Top	63	010/EZ099 Stand Baseplate
28	010/EZ012 Top Retaining Bracket	64#	002/EZ071 Store Stand Casting
29	010/EZ003 Door Back Plate	65	004/EZ078 Stand Backplate
30	004/EZ004 Door Rope Channel	66#	004/EZ102 Store Stand Lower Heatshield
31	004/EZ097 Horizontal Door Rope Channel	67#	010/EZ130A Upper Heatshield
32#	002/EZ001/A Door Casting	68#	010/BU034 Vertical Rear Flue Adapter
33	010/EZ061 Receiver Plate Upper	69	004/EZ095 Riddler/ Ashpan Operation Tool
34#	010/EZ057 Door Latch Assembly	70#	010/EZ120 Drawer (Optional Extra)
35	008/EZ106 Door Handle		

\*These items are not shown on the drawing.  
# Please specify colour when ordering.

To obtain spare parts please contact your local stockist giving Model, Part No. and Description. In case of difficulty contact the manufacturer at the address shown. This drawing is for identification purposes only.

# Charnwood Arc 5 Low Parts List

Issue I



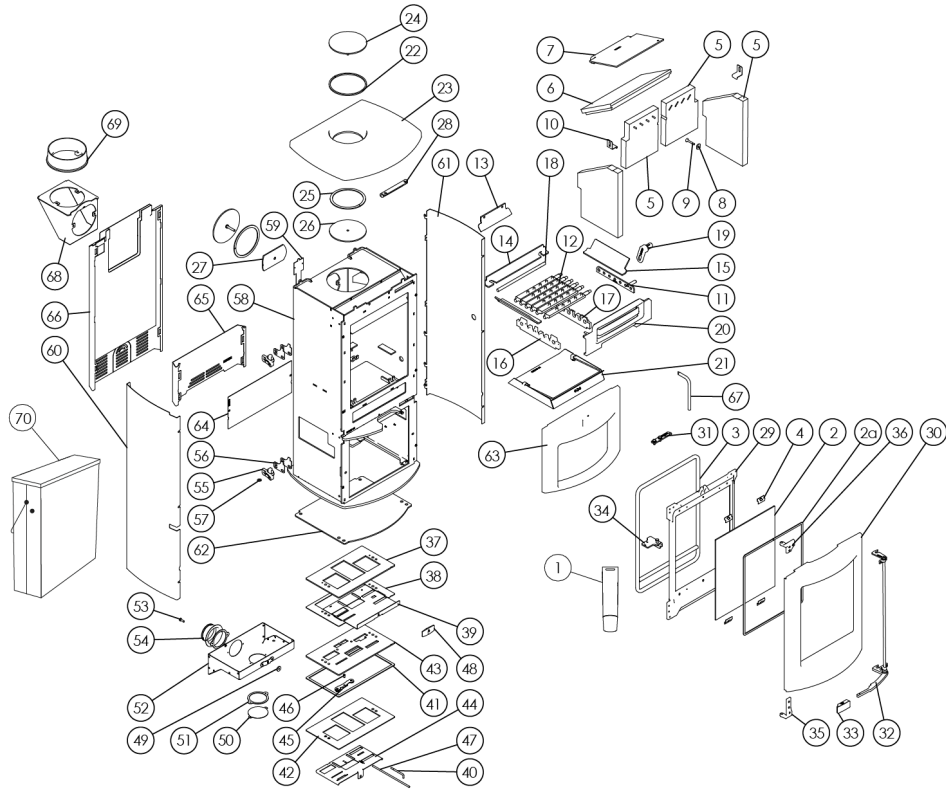
ItemPart No.	Description	ItemPart No.	Description
1*	008/TH085 Door Seal Adhesive	34	008/EZ106 Door Handle
2	006/EZ018 Glass Inc. Seal	35	010/EZ055 Lower Latch Plate
2a	008/EZ024 Glass Seal	36	010/EZ065 Hinge Plate Lower
3	008/EZ002/S Door Seal Kit Inc Adhesive	37	002/EZ053 Lower Hinge Bracket
4	004/EZ023 Glass Retainer	38	002/EZ054 Upper Hinge Bracket
5	011/EZ029S Fire Brick Set (4)	39	010/EZ005 Air Slider Control Plate
6	011/EZ031 Brick Throat Plate	40	010/EZ034 Slider Air Control Backing
7	010/EZ032 Upper Baffle Plate	41	004/EZ033 Wood/Multifuel Surround
8	010/ER036 Brick Retaining Washer	42	004/EZ035 Slider Wood/Multifuel
9	008/FFB125 Coach Bolt M6 x 45	43	004/EZ014 Wood/Multifuel Selection Lever
10	004/XV30 Brick Bracket	44	008/EZ037 Air Slider Control Gasket
11	002/CG23 Driving Grate Bar	45	008/EZ006 Airbox Gasket
12	002/CG01S5 Set of Grate Bars (5)	46	004/BR015 Clicker Retainer Plate
13	010/EZ013 Ash Deflector	47	008/ES36/01 Brass Ball Catch
14	010/EZ080 Rear Fire Plate	48	004/EZ020 Air Control Slider
15	010/EZ079 Side Fire Plate	49	004/EZ016 Control Rod
16	012/SY33 Mover Bar	50	008/BR052 Felt Washer
17	002/SY30 LH Carrier Bar	51	008/EZ105 Air Control Handle
18	002/EZ077 RH Carrier Bar	52	004/EZ041 Air Box Cover
19	012/CG05 Idler Rod	53	004/BR054 Blanking Plate
20	002/EZ098 Riddler Knob	54	008/BR044 Gasket
21	002/EZ007 Front Fence	55	008/FFS062 Defra Stop
22	004/EZ017 Ashpan	56	004/BR053 Air Inlet Spigot
23*	008/NV38 Flue Fixing Rope Seal	57	002/EZ063 Door Hinge Bracket
24	012/PV09 Blanking Plate	58#	001/EZL010 Firebox
25	010/EY51 Clamping Plate	59	012/EZL011 Serial Number Label
26#	002/PV12B Flue Collar	60#	004/EZL091L Left Side Panel
27#	002/EZ009 Cast Top	61#	004/EZL091R Right Side Panel
28	010/EZ012 Top Retaining Bracket	62	004/EZL149 Tool Holder
29	010/EZ003 Door Back Plate	63	004/EZL088 Fixing Plate
30	004/EZ004 Door Rope Channel	64#	002/EZ085 Base Casting Short
31	004/EZ097 Horizontal Door Rope Channel	65#	010/EZ130A Upper Heatshield
32#	002/EZ001/A Door Assembly	66#	010/BU034 Vertical Rear Flue Adapter
33	010/EZ061 Receiver Plate Upper	67	004/EZ095 Riddler/ Ashpan Operation Tool

\*These items are not shown on the drawing.  
# Please specify colour when ordering.

To obtain spare parts please contact your local stockist giving Model, Part No. and Description. In case of difficulty contact the manufacturer at the address shown. This drawing is for identification purposes only.

# Charnwood Arc 7 Parts List

Issue G



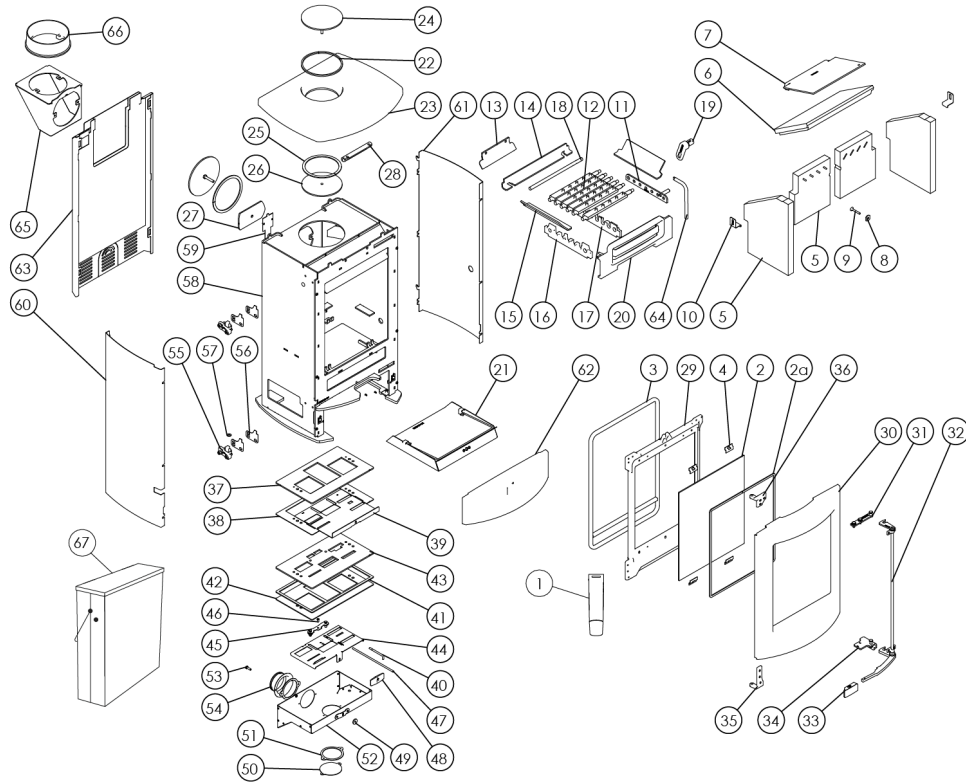
ItemPart No.	Description	ItemPart No.	Description
1*	008/TH085 Door Seal Adhesive	36	002/KZ054 Upper Hinge Bracket
2	006/KZ018 Glass Inc. Seal	37	010/KZ044 Air Control Slider Backing Plate
2a	008/KZ024 Glass Seal	38	004/KZ043 Wood/Multifuel Surround Plate
3	008/KZ074/S Door Rope Inc. Adhesive	39	004/KZ045 Slider Wood/Multifuel
4	004/EZ023 Glass Retainer	40	004/EZ014 Wood/Multifuel Selection Lever
5	011/KZ029S Fire Brick Set (4)	41	008/KZ006 Airbox Gasket
6	011/KZ031 Brick Throat Plate	42	008/KZ047 Slider Control Gasket
7	010/KZ032 Upper Baffle Plate	43	010/KZ005 Air Control Plate
8	010/ER036 Brick Retaining Washer	44	004/KZ020 Air Slide
9	008/FFB125 Coach Bolt M6 x 45	45	004/BR015 Clicker Retainer Plate
10	004/XV30 Brick Bracket	46	008/ES36/01 Brass Ball Catch
11	010/KZ083 Mover Bar	47	004/EZ016 Control Rod
12	002/CG01S6 Set of Grate Bars (6)	48	008/EZ105 Air Control Handle
13	010/EZ013 Undergrate Ash Deflector	49	008/BR052 Felt Washer
14	010/KZ080 Rear Fire Plate	50	004/CR064 Blanking Plate
15	010/KZ079 Side Fire Plate	51	008/CR063 Blanking Plate Gasket
16	002/SY30 LH Carrier Bar	52	004/KZ039 Air Box Cover
17	002/EZ077 RH Carrier Bar	53	008/FFS062 Defra Stop
18	012/FW14 Idler Rod	54	010/CR048/S Air Inlet Spigot
19	002/EZ098 Riddler Knob	55	002/KZ065 Door Hinge Bracket
20	002/KZ007 Front Fence	56	004/KZ066 Door Hinge Shim
21	004/KZ017 Ashpan	57	008/FFW024 M8 Brass Washer
22#	010/KZ131 Flue Pipe Surround Ring	58#	001/KZ010 Firebox
23#	002/KZ009 Cast Top	59	012/KZ011 Serial Label
24	010/KZ132 Blanking Plate	60#	004/KZ093L Left Side Panel
25	008/KS134 Flue Sealing Gasket	61#	004/KZ093R Right Side Panel
26	010/KZ133 Blanking Plate Retainer	62	010/KZ099 Stand Baseplate
27	010/AY51 Clamping Plate	63#	002/KZ071A Store Stand Casting
28	010/EZ012 Top Retaining Bracket	64	004/KZ078 Stand Backplate
29	002/KZ003 Door Back Plate	65#	004/KZ102 Lower Heatshield
30#	002/KZ001/A Door Casting	66#	010/KZ103A Upper Heatshield
31	010/EZ061 Upper Latch Receiver Plate	67	004/EZ095 Riddler/ Ashpan Operation Tool
32#	010/KZ058 Lock Linkage Assembly	68#	010/TW33 Vertical Rear Flue Adapter (Optional Extra)
33	008/EZ106 Door Handle	69#	002/CH12B Flue Collar
34	010/KZ064 Lower Latch Receiver Plate	70*	010/EW51 Ash Carrier (Optional Extra)
35	002/KZ053 Lower Hinge Bracket		

\*These items are not shown on the drawing.  
# Please specify colour when ordering.

To obtain spare parts please contact your local stockist giving Model, Part No. and Description. In case of difficulty contact the manufacturer at the address shown. This drawing is for identification purposes only.

# Charnwood Arc 7 Low Parts List

Issue F



ItemPart No.	Description	ItemPart No.	Description
1*	008/TH085 Door Seal Adhesive	34	010/KZ064 Lower Latch Receiver Plate
2	006/KZ018 Glass Inc. Seal	35	002/KZ053 Lower Hinge Bracket
2a	008/KZ024 Glass Seal	36	002/KZ054 Upper Hinge Bracket
3	008/KZ074/S Door Seal Kit Inc Adhesive	37	010/KZ044 Air Control Slider Backing Plate
4	004/EZ023 Glass Retainer	38	004/KZ043 Wood/Multifuel Surround Plate
5	011/KZ029S Fire Brick Set (4)	39	004/KZ045 Slider Wood/Multifuel
6	011/KZ031 Brick Throat Plate	40	004/EZ014 Wood/Multifuel Selection Lever
7	010/KZ032 Upper Baffle Plate	41	008/KZ006 Airbox Gasket
8	010/ER036 Brick Retaining Washer	42	008/KZ047 Slider Control Gasket
9	008/FFB125 Coach Bolt M6 x 45	43	010/KZ005 Air Control Plate
10	004/XV30 Brick Bracket	44	004/KZ020 Air Slide
11	010/KZ083 Mover Bar	45	004/BR015 Clicker Retainer Plate
12	002/CG01S6 Set of Grate Bars (6)	46	008/ES36/01 Brass Ball Catch
13	010/EZ013 Undergrate Ash Deflector	47	004/EZ016 Control Rod
14	010/KZ080 Rear Fire Plate	48	008/EZ105 Air Control Handle
15	010/KZ079 Side Fire Plate	49	008/BR052 Felt Washer
16	002/SY30 LH Carrier Bar	50	004/CR064 Blanking Plate
17	002/EZ077 RH Carrier Bar	51	008/CR063 Blanking Plate Gasket
18	012/FW14 Idler Rod	52	004/KZ039 Air Box Cover
19	002/EZ098 Riddler Knob	53	008/FFS062 Defra Stop
20	002/KZ007 Front Fence	54	010/CR048/S Air Inlet Spigot
21	004/KZ017 Ashpan	55	002/KZ065 Door Hinge Bracket
22#	010/KZ131 Flue Pipe Surround Ring	56	004/KZ066 Door Hinge Shim
23#	002/KZ009 Cast Top	57	008/FFW024 M8 Brass Washer
24	010/KZ132 Blanking Plate	58#	001/KZL010 Firebox
25	008/KS134 Flue Sealing Gasket	59	012/KZL011 Serial Label
26	010/KZ133 Blanking Plate retainer	60#	004/KZL093L Left Side Panel
27	010/AY51 Clamping plate	61#	004/KZL093R Right Side Panel
28	010/EZ012 Top Retaining Bracket	62#	002/KZL090A Front Casting
29	002/KZ003 Door Back Plate	63#	004/KZ103A Heatshield
30#	002/KZ001/A Door Casting	64	004/EZ095 Riddler/ Ashpan Operation Tool
31	010/EZ061 Upper Latch Receiver Plate	65#	010/TW33 Vertical Rear Flue Adapter (Optional Extra)
32#	010/KZ058 Rod Handle Assembly	66#	002/CH12B Flue Collar
33	008/EZ106 Door Handle	67	010/EW51 Ash Carrier (Optional Extra)

These items are not shown on the drawing.  
# Please specify colour when ordering.

To obtain spare parts please contact your local stockist giving Model, Part No. and Description. In case of difficulty contact the manufacturer at the address shown. This drawing is for identification purposes only.







*your premier dealer*

**charnwood** BISHOPS WAY, NEWPORT, ISLE OF WIGHT PO30 5WS, UNITED KINGDOM  
T:+44 (0)1983 537777 • F:+44 (0)1983 537788 • CONTACT US AT [WWW.CHARNWOOD.COM](http://WWW.CHARNWOOD.COM)

